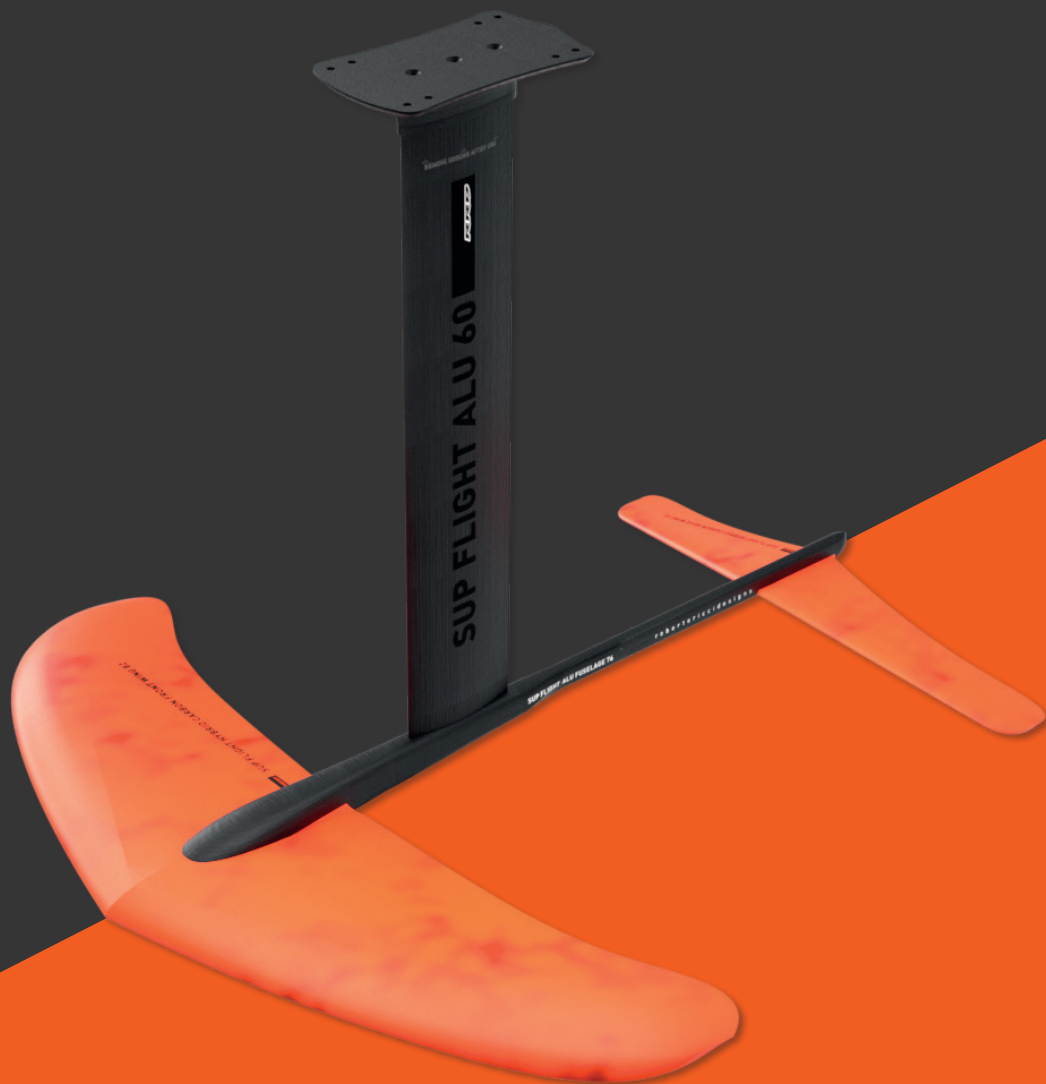




RRD **SH-FLIGHT ALU 60**

OWNERS' MANUAL AND ASSEMBLING INSTRUCTION



- ENGLISH MANUAL -

French, German, Spanish, Italian version online on:

www.robertoriccidesigns.com

SAFETY

READ THIS MANUAL CAREFULLY BEFORE USING YOUR RRD SH-FLIGHT ALU 60 HYDROFOIL AND KEEP IT STORED FOR FUTURE READING

Rrd strongly recommends to follow surfing lessons in a specialized school before using a hydrofoil for the first time. The use of a hydrofoil involves inherent risks and can cause severe injuries or, sometimes fatal, accidents if misused.

To find your nearest school, please check online on the www.robertoriccidesigns.com website under the tab «schools». When using a hydrofoil, you agree to take full responsibility for your own safety and those of others. This includes informing subsequent users/owners of your equipment of the risks and responsibilities involved. Before practicing, make sure that you are properly covered by an insurance for any damage or injuries caused to third parties while practicing windsurfing sports. Please refer to your national surf body or federation to get more information on insurance and responsibilities.

Be aware that the design and construction of the hydrofoil involves sharp and stiff edges that could easily cause severe abrasions and/or cuts. It is very highly recommended to familiarize with the dimensions, weight, behaviour of the hydrofoil both assembled and unasssembled to the board while carrying it to the water and/or keeping it on the beach. Never leave the hydrofoil unattended on the beach. Any wind changes might cause the hydrofoil to move, fly away and cause severe damages to you and/or the others around the hydrofoil.

SAFETY TIPS:

Constant care and caution remains the best way to avoid any problem but specialized equipment contributes to your own safety as well. Please keep in mind that wind and weather can be unpredictable and that no-one can be in full control of the hydrofoil at all times.



• Rule N°1: YOUR PERSONAL SAFETY

It is strongly recommended to practice in the company of other users who could eventually call for assistance or help in case of emergency. You should never ride alone.

• Rule N°2: PERSONAL SAFETY EQUIPMENT

Helmet:

It is strongly recommended to wear a helmet to protect you in case of a fall or any other unexpected situations.

Wetsuit :

Choose a full-length wetsuit (water T° <19°C[66°F]) or a shorty (water T° >19°C[66°F]) depending on the water temperature. But be aware that you will use more energy when you are cold.

Impact vest :

The impact vest can be a critical piece of equipment if you take a hard crash and will become a true asset if you ever have to swim back to the shore.

• Rule N°3: CHOOSE YOUR SPOT CAREFULLY

The choice of a good spot is an essential decision for safe learning. Don't rider the SH Flight Alu 60 on crowded breaks. To choose your place of practice, it is important to select a spot suited to the practice of hydrofoiling. Favor a spot without reefs or rocks and avoid crowded areas. Observe local laws and regulations in the area you plan to use the equipment.

• Rule N°4: KNOW THE WEATHER FORECAST

Be up-to-date with the local weather and surf forecast, (apps, radio, web, harbor crew, local schools). Check on the tides schedule and the areas for rip currents.

• Rule N°5: HELP OUT OTHERS AND SHOW RESPECT

Help out others:

Keep a constant eye on your surroundings, and pay attention to others. Do not hesitate to help out or go after a struggling surfer. But make sure you don't bring yourself in danger.

Respect bystanders :

Never lend your equipment to a non foil rider. The SH Flight foil is dangerous when left unattended on the beach. Inform any people or spectators close to the board and hydrofoil that there might be an accident risk in case they collide with the board and /or the hydrofoil.

Before using your foil make sure you read this

! WARNING MESSAGE !

- Always familiarize yourself with all applicable federal, state and local laws, the waterways, the area, and the proper use of the equipment.
- Always read your owner's manual and understand your equipment before using it.
- Always inspect equipment before each use, including all components of your foil, your board and the connections between components and the board mount. Never use an equipment with missing, damaged or defective parts.
- Use caution when transporting your foil, both for the safety of yourself and others and for the longevity of your equipment.
- Always wear protective equipment appropriate for the environment and conditions in which you are using your foil and your foil board.
- Always use a helmet.
- Always use a State/Country Marine department approved boating vest and protective shoes.
- Always ride in control, away from hazards, and at speed appropriate for your ability. Do not foil in shallow water or near shore, pilings, docks, rafts, swimmers, other watercraft or other obstacles.
- Falling and the injuries or death that may result, are inherent risks in the sport.
- Do not operate any watercraft, windsurf, surf, or foil under the influence of alcohol or drugs.
- The warnings and practices set forth above represent some common risks encountered by users.
- This list does not purport to cover all instances of risk or danger. Please use common sense and good judgment.
- GET TO KNOW THE RRD SH FLIGHT ALU 60 HYDROFOIL

The front and rear wings of the hydrofoil work as lifting devices. The wings create a lifting force from the flow of water that travels across them at speed. This is the reason why they are built with a specific sectional profile:



The shape of the wings' profile shall not be modified, filled and sanded. Doing so would alter the balance and prevent the correct operation of the hydrofoil.

! WARNING MESSAGE !

In order to guarantee the correct behavior and performances of the hydrofoil, the rear edge (trailing edge) of the wings must remain very thin, thereby making this part more fragile in case of impacts. During handling and use of the hydrofoil, the user should be particularly cautious with these sharp areas in order to avoid any risk of injury.

USING THE RRD SH-FLIGHT HYDROFOIL

On shore Handling :

The RRD sup foil should always be laid on its side when left on the ground, Never leave the supfoil (assembled with the board) standing up or upside down. It can easily fall on its side and get damaged.



When heading for the water, the sup foil should always be carried very carefully. Hold the board on its side or on your head like explained in the pictures, like this:



! WARNING MESSAGE !

A safety margin is required as the board and foil will sink to some degree when the rider gets onto the board. To prevent any risk of collision with a reef or a shoal, it is strongly recommended to walk away from the shore while keeping very carefully the board at its side, until reaching deep enough water. Avoid getting into the water in wave conditions as it could make this procedure difficult and dangerous.

When heading back to the shore, it is necessary to get off the board at the same distance from the shore that had been required to start safely. Again, it is recommended to walk back to the shore keeping the board carefully on its side.

TO KEEP THE SH-FLIGHT HYDROFOIL IN GOOD CONDITIONS: **After every use, make sure you always:**

- Clean and rinse all the parts of the hydrofoil before storing them.
- Take apart the front and rear wing and fuselage from the mast.
- Protect the parts by storing them in their original packaging or using another appropriate protection.
- If chips, dents, or bumps appear following an impact, fill with epoxy resin or primer and sand until the local surface is smooth and clean. It is strongly recommended to let a professional handle these kinds of repairs.
- Make sure the surface of the blades remain smooth and clean. The sup foil works using a dynamic equilibrium and the flow around the wings can be very sensitive to any damages. Sudden stalling can happen if the surface condition of several parts are compromised. Stalling the foil can unsettle the rider and result in abrupt falls.

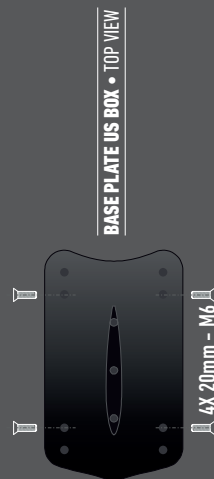
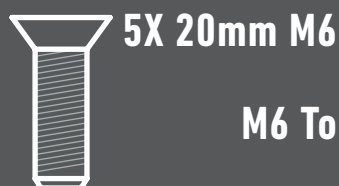
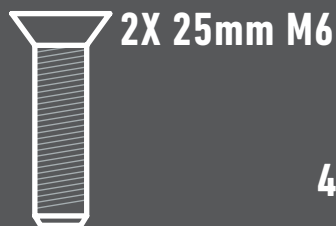
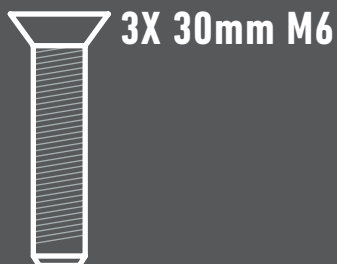
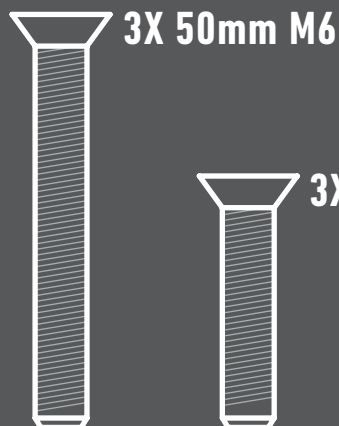
IMPORTANT NOTE

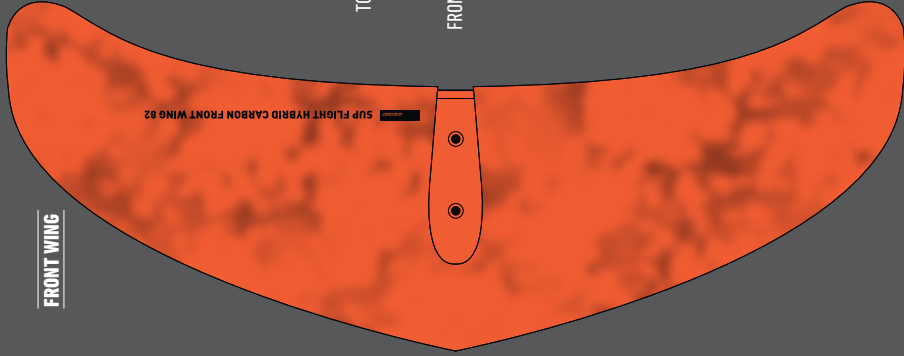
Our SH-flight hydrofoil is composed of Aluminium parts (Mast, Fuselage, Plate) and Hybrid Carbon parts (Front and Rear Wings) assembled together by stainless steel screws. The mast is assembled to the board using a dedicated plate with Tuttlebox inserts. In order to maintain the assembling and disassembling process and easy one to be performed and keep a long product lifetime we strongly recommend to follow this maintenance precautions:

After use, always disassemble the hydrofoil from the board, the wings from the fuselage and the fuselage from the mast and rinse the screw holes with fresh water.

In order to keep the Stainless steel screw holes properly maintained and free from oxidation, we strongly recommend the use of this product: Tef-Gel made by TIKAL, (corrosion eliminator GEL) that should always be spread around the female threaded holes in the stainless steel parts.

SH FLIGHT SCREW SET





MAST ALU 60 CM • SIDE VIEW



TOP VIEW



FRONT VIEW



CORRECT POSITION FOR 5 DIFFERENT SCREW LENGTHS

HYDROFOIL ASSEMBLING INSTRUCTIONS

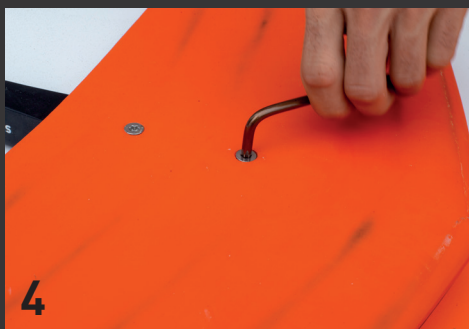
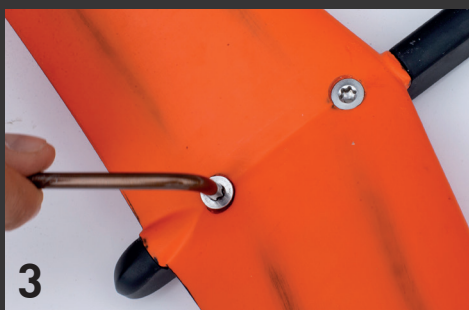
In order to assemble your new SH-Flight Hydrofoil correctly please follow this instructions:

1 - 2) Join the mast to the plate. Then tighten the 3 x 60mm screws to secure the plate to the mast and make sure that the screws are tightened properly.

3) Assemble the rear wing with the 1x 20mm and 1x16mm M6 screws to the 2x fuselage holes. Make sure the fuselage rear wing screw holes are clean and free from sand or any debris that might cause friction and bad assembling fit. Fix the rear wing tightly to the fuselage making sure that the screws are properly aligned and they screw properly to the 2x fuselage stainless screw holes. Do not force the screws into the metal insert in the very beginning of the screwing process. Doing so might damage the thread of the metal insert and cause a bad alignment of the rear wing angle to the fuselage. A wrongly assembled rear wing onto the fuselage will cause a wrong lift force on to the hydrofoil and a wrong hydrofoil trim on the water. This might lead to a malfunctioning of the hydrofoil and damage the threaded screw holes.

4) Take the front wing with the 2x 25mm M6 and place it onto the fuselage. Align the front wing with the 2x fuselage holes. Make sure the fuselage front wing screw holes are clean and free from sand or any debris that might cause friction and bad assembling fit. Fix the front wing tightly to the fuselage making sure that the screws are properly aligned and they screw properly to the 2x fuselage stainless screw holes. Do not force the screws into the metal insert in the very beginning of the screwing process. Doing so might damage the thread of the metal insert and cause a bad alignment of the front wing angle to the fuselage. A wrongly assembled front wing onto the fuselage will cause a wrong lift force on to the hydrofoil and a wrong hydrofoil trim on the water. This might lead to a malfunctioning of the hydrofoil and damage the threaded screw holes.

5) take the fuselage assembled with the rear and front wings, and assemble it to the



aluminium mast fuselage head using the 3x 50mm M6 screws. Make sure the fuselage box and mast fuselage head are clean and free from sand or any debris that might cause friction and bad assembling fit. Fix the fuselage tightly to the mast making sure that the screws are properly aligned and they screw properly to the mast stainless steel metal inserts. Do not force the screws into the metal insert in the very beginning of the screwing process. Doing so might damage the thread of the metal insert and a bad not aligned fit. A wrongly assembled fuselage might cause loss of performance and direction control might be hard or impossible.

6 - 7) Take the foilboard with upside down with the bottom facing upwards. Firmly screw the 4X20mm M6 screws of the plate to the board's boxes. Make sure plate is firmly tightened to the board. Your Hydrofoil is now ready to be used.

8) For the disassembling process, please proceed with the points 1-7 above in a backwards order.



TRIM OF THE HYDROFOIL ONTO THE BOARD

Use the track slots to adjust the plate's position depending on your riding style, stance and preferences.



HI-FLIGHT - SUP AND WINDSURFING FOILBOARD

The HI-FLIGHT sup and ws foilboard is designed to allow an easy approach to Sup foiling and progress with controlled and accessible performance. Sup foiling is not as easy as it looks on Instagram posts from those super talented foil riders. The proper board and foil is the key to success.

We first tried smaller and shorter boards expecting foiling to be easier and to have more control. However, the shorter or smaller boards are quite difficult to be paddled and have found great advantages in using a longer and thicker board shape instead. From the first prototypes of 120 lts, we have increased the volume up to 150 lts and the board size is 240 x 78 cms (7'9" x 30 3/4"). This bigger shape gives extra stability when paddling and allows for a faster positioning on the line up. Catch the right wave at the right speed and you will have the necessary momentum to avoid out of control take offs.

A straight rocker line with a dead flat tail section helps to achieve immediate speed when paddling and reduces the problem of excessive slowing down on touchdowns; keeping the board out of the water, allowing to recuperate speed, and to keep you foiling.

The board has a marked beveled edge on the nose section of the rails all the way to the hydrofoil base plate attachment point. This special rail shape allows to keep momentum when foiling and further reduces the impact resistance on touch downs; this is also supported by a deep V nose and center section of the hull.

A deep concave deck shape allows the feet to quickly assume the correct angle and position on the board once foiling on a wave.

The flat area under your front foot will help increase the capacity to apply maximum pressure on the nose to keep foiling at higher speed once up and riding.

The crocodile skin 3 mm EVA deck has a striped color coded design (from nose to tail: orange/black/gray and white), and on the gray stripe area the crocodile skin texture of the EVA is replaced by a diamond grooved texture; this will allow you to touch and feel the difference of the texture of the surface, and recognize the correct position of your back foot; directly on top of the foil plate attachment without looking at it.

The windsurfing mast box slot will also be the touch and feel indicator to help achieve the same, correct, front foot placement.

The two US box slots in the bottom will allow the foil plate to move back and forth and achieve the correct foil placement. A forward plate placement will increase control and keep the nose of the board down, while a rear plate placement will increase lift and keep the nose of the board on a slightly more upright angle when foiling.

**MODEL**

SIZE "CM" - "INCH"

VOLUME "LTS"

ACCESSORIES

FIN + BOX SYSTEM

ARTICLE CODE

HI-FLIGHT 7'9"

240x78cm / 7'9" x 30 3/4"

150

4 x footstraps

No fins delivered

24HIF

DOLPHIN 1 - HYDROFOIL BOARD

The Dolphin1 is a full composite board with a wood deck and bottom, it has PVC reinforcement under the heel area and a special shaped full concave deck. It allows your feet to be completely pointed down towards the nose and the middle part of the board; a correct foot and leg position is what you want to have when you foil. The rails have a special pronounced tucked under edge bevel which reduces impact when you come down from height.

When we first shaped the Dolphin kitefoil board a little over a year ago, we never imagined that today this same board could be used as a surffoil. The design, the volume, and the concave deck, paired with the slow lift of the SH Flight foil, make this combo ideal for flying above the ocean, for light wind kitefoiling, and even freestyling for riders of all levels. The volume of the board allows for some early take offs, while the concave deck makes for a comfortable and stable ride.

SURF. KITE. FOIL. ALL WITH ONLY ONE BOARD.





MODEL

DOLPHIN 1

SIZE "CM"

160 x 52

LTS

38

REC. FOIL

FULL FLIGHT 80

ARTICLE CODE

22D1KFB





US BOX BASE PLATE

MAST

REAR WING

FUSELAGE

FRONT WING

DISTRIBUTED BY:

Ricci International S.r.l.
Via Rubino, 15/19
58100 Grosseto - Italy
Ph. +39.0564.452304 / 455786
Fax +39.0564.452691

FOLLOW US ON:



- facebook.com/RRDinternational
 - vimeo.com/robertoriccidesigns
 - issuu.com/robertoriccidesigns
 - [@rrd_international](#) [#robertoriccidesigns](#)
[#rrd](#) [#rrdwindsurf](#)
-

www.robertoriccidesigns.com
info@robertoriccidesigns.com